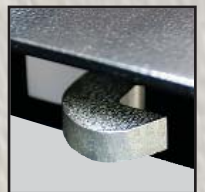




SENTRI XLOCK™ 515

(1280mm L x 450mm H x 440mm W overall size)
(1244mm L x 446mm H x 420mm W internal size)

- Substantial construction from 1.5, 2mm sheet steel
- XLOCK™ The whole system operates with 1 key in 1 lock with 1 turn
- Guaranteed key difference of 1:1000. 2 keys per box. Every box has its own individual number for optional replacement key service
- Anti-jimmy bars all round
- Twin hydraulic arms and tool mat for every box
- Drop down recessed handles with rubber pads
- Covered power cable access point for charging tools in the box
- Black powder coated finish
- Full width split heavy duty piano hinge welded to box and lid
- 1 year manufacturers warranty against faulty workmanship
- 44kg



sentrybox

Don't wait until it's too late

The Professionals Choice